

Chişinău Public Transport Strategy



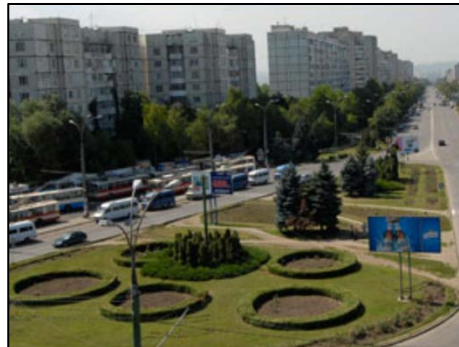
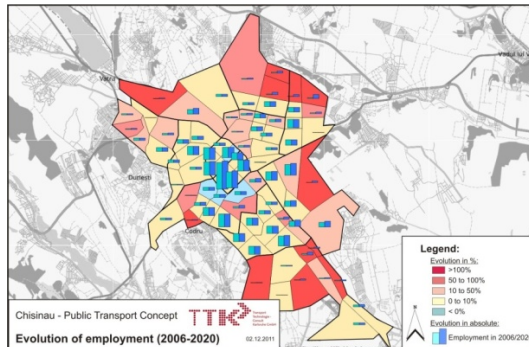
Regulation and Restructuring advice programme

Transport planning, management consultancy

Client: City of Chisinau
Partner : Metroul SA
End: 2013



European Bank
for Reconstruction and Development



Demand prognosis (horizon 2010)

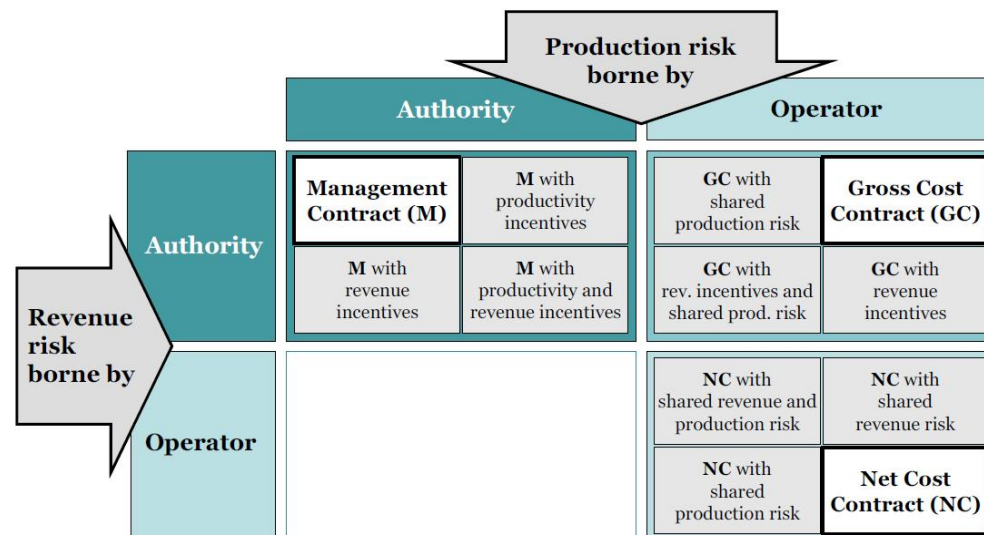
In 2011 Chişinău, capital city of Moldova, and the European Bank for Reconstruction and Development commissioned TTK to carry out a technical study aiming to reorganise Chişinău's PT system and improve the overall quality of supply which is currently fragmented and managed by many different operators.

The challenge was to find a long term transport strategy not only to move the PT system from competition on the routes to competition for the routes, but also to move to a more regulated public transport market. This strategy was developed by :

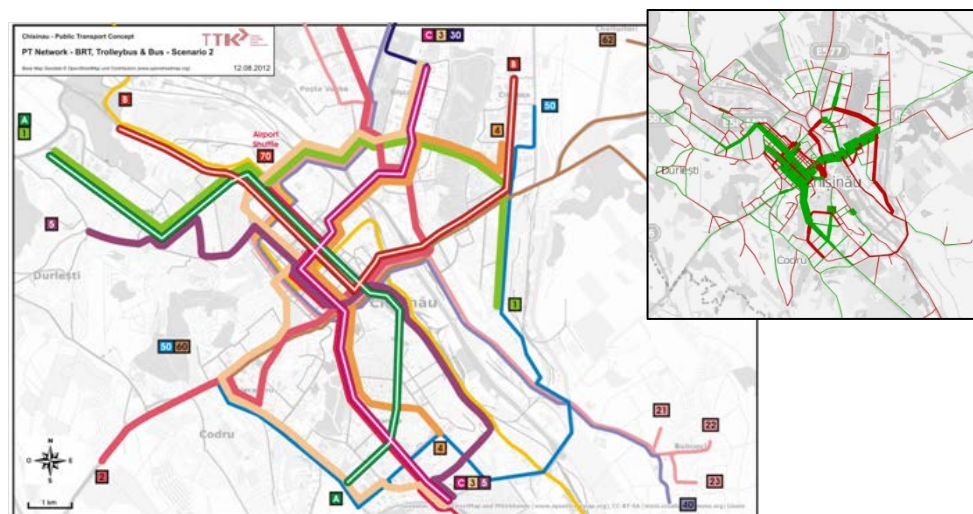
- agreeing transport goals with city officials,
- modelling the current and future travel demand in VISUM,
- identifying urgent PT infrastructure and asset needs,
- developing annual investment envelopes for the next 5-10 years,
- developing current accessibility indicators for different population groups and areas,
- setting a policy framework to help to achieve the desired transport outcomes – principles.

In order to gather the conditions for a long term implementation, TTK assisted the City in:

- defining the respective roles of trolleybuses operated by the Company, other standard bus operators and privately owned and operated microbuses,
- setting up the institutional framework of the Chisinau PT sector, including the improved regulation of microbuses,
- establishing an on-going route-tendering regime that encourages competition while enabling the City to acquire acceptable safety and environmental standards,
- monitoring the quality of the services provided under the Public Service Contract.



Risk sharing between authority and operator



PT Network propositions : BRT, Trolleybus and buslines , VISUM Demand evolution modelisation (2012-2025)